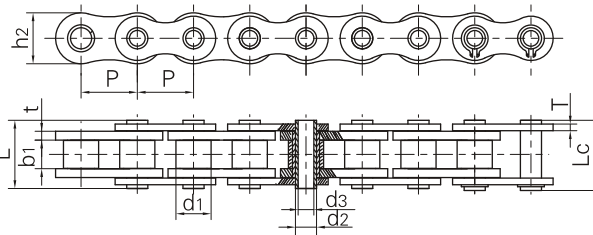
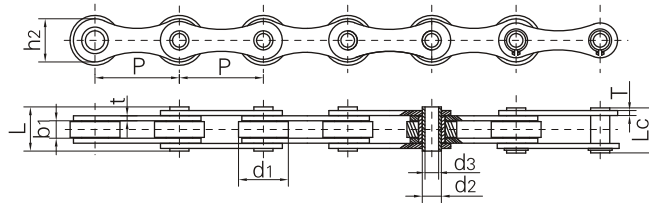


空心销轴链
Hollow pin chains

A型
Type A



B型
Type B



Vision Chain No.	节距 Pitch	滚子直径 Roller diameter	内节内宽 Width between inner plates	销轴直径 Pin diameter		销轴长度 Pin length		内链板高度 Inner plate depth	链板厚度 Plate thickness	极限拉伸载荷 Ultimate tensile strength	平均拉伸载荷 Average tensile strength	每米长重 Weight per meter	型号 Type
	P	d ₁ max	b ₁ min	d ₂ max	d ₃ min	L max	L _c max	h ₂ max	t/T max	Q min	Q ₀	q	
	mm	mm	mm	mm	mm	mm	mm	mm	mm	kN/LB	kN	kg/m	
10BHB	15.875	10.16	9.65	5.94	4.04	19.30	20.6	14.70	1.70	17.00/3864	20.8	0.86	A
12BHP	19.050	12.07	11.68	6.50	4.00	21.60	22.8	15.90	1.85	23.60/5364	25.9	1.09	A
60HB	19.050	11.91	12.70	7.00	5.01	25.50	26.6	18.00	2.42	20.00/4545	22.4	1.35	A
16BHBF1	25.400	15.88	12.70	9.53	7.05	30.80	32.2	23.00	4.15/3.1	40.00/9091	45.0	2.28	A
HB25.4	25.400	20.00	8.00	8.00	5.20	19.50	20.5	17.00	2.03	25.00/5680	28.0	1.30	A
HP35	35.000	20.00	16.00	13.35	10.20	30.40	31.6	26.30	2.50	23.52/5345	26.4	2.02	A
HB35	35.000	20.00	16.00	14.00	10.2	32.00	33.5	38.10	3.00	40.00/9091	45.0	2.39	A
HB38.1	38.100	20.00	8.00	8.00	5.30	19.60	20.7	17.30	2.03	28.00/5682	28.8	0.98	B
HB38.1F1	38.100	20.00	18.00	10.50	5.10	39.00	40.3	22.00	4.00	60.00/13636	64.3	2.59	B
HB38.1F3	38.100	25.40	12.70	12.00	8.30	27.00	28.6	38.10	2.50	25.00/5682	28.8	1.51	B
HB38.1F4	38.100	20.00	12.70	8.00	5.20	26.00	27.2	17.00	2.42	24.00/5455	26.9	1.48	B
HP40F4	40.000	26.00	10.00	11.40	8.20	26.50	28.0	24.00	3.00	50.00/11364	56.7	2.20	B
HP41.75F1	41.750	17.10	20.20	11.11	8.20	35.70	39.0	21.65	3.10	26.50/6022	29.2	1.60	A
HP41.75F2	41.750	17.10	20.20	11.11	8.20	35.70	41.0	25.26	3.10	49.00/11136	54.8	2.04	A
HP41.75F3	41.750	17.00	20.50	11.00	8.30	36.00	39.5	21.40	3.00	27.00/6136	28.0	1.62	A
HP50F2	50.000	31.00	15.00	13.20	10.20	36.50	38.0	25.00	4.00	40.00/9091	43.2	3.40	B
HB50	50.000	30.00	10.50	11.40	8.20	27.40	28.6	26.00	3.10	50.00/11364	53.6	2.23	B
HB50.8	50.800	30.00	10.50	11.40	8.20	27.40	28.6	26.00	3.10	50.00/11364	53.6	2.56	B
HB50.8F4	50.800	30.00	10.50	13.60	8.20	27.40	28.9	26.00	3.10	42.00/9545	48.2	2.28	B
HB63	63.000	30.00	10.00	11.40	8.10	26.70	28.1	26.50	3.10	50.00/11364	53.6	2.07	B
HB63F1	63.000	40.00	10.00	11.40	8.10	26.70	28.1	26.50	3.10	50.00/11364	53.6	2.27	B
HB63F2	63.000	40.00	20.00	11.40	8.10	36.70	38.1	26.50	3.10	50.00/11364	53.6	3.20	B
HB63F3	63.000	40.00	15.00	11.40	8.20	35.60	37.0	26.50	4.00	35.00/7955	38.5	3.90	B
HB63F4	63.000	30.00	20.00	11.40	8.10	27.40	36.7	38.10	3.10	50.00/11364	53.6	2.97	B
HB63F6	63.000	30.00	10.00	11.70	8.20	26.70	28.1	26.50	3.10	50.00/11364	56.7	2.08	B
HB63F7	63.000	40.00	18.00	14.00	10.20	38.00	39.5	28.00	4.00	50.00/11364	56.7	4.26	B
HB63F8	63.000	30.00	20.00	11.70	8.10	36.50	38.0	26.50	3.10	50.00/11364	56.7	2.91	B
HB100	100.000	30.00	10.50	11.40	8.20	27.40	28.6	26.00	3.10	50.00/11364	53.6	1.56	B