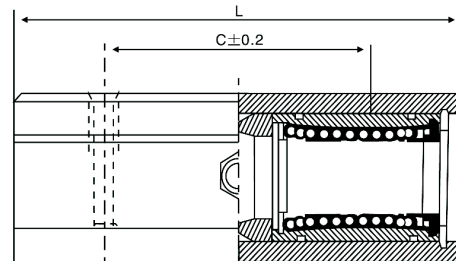
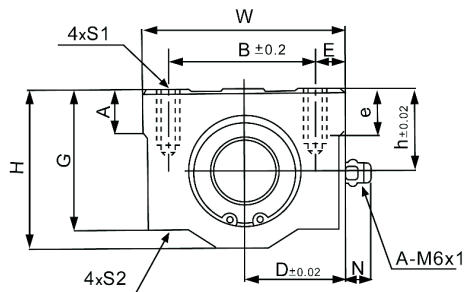
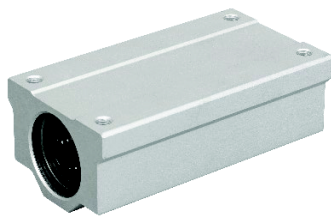


KBA-L TÍPUS (EURÓPAI SZABVÁNY)
KBA-L TYPE (EUROPE SERIES)



Cikkszám Code	Típus Type	Tengely Ø Shaft Ø	h	D	W	L	H	G	T	B	C	E	S1xe	S2	Terhelés Load		Tömeg Weight (g)
															C	C0	
(mm)															(N)	(N)	
84.033.004	KBA10LUU	10	13	20	40	68	26	21	8	28	46	6	M5x12	4,3	588	1100	180
84.033.005	KBA12LUU	12	15	22	44	77	30	24,5	8	33	64	5,5	M5x12	4,3	813	1570	237
84.033.007	KBA16LUU	16	19	25	50	89	38,5	32,5	9	36	79	7	M5x12	4,3	1230	2350	405
84.033.009	KBA20LUU	20	21	27	54	100	41	35	11	40	90	7	M6x12	5,2	1410	2740	510
84.033.011	KBA25LUU	25	26	38	76	136	51,5	42	12	54	119	11	M8x18	7	1610	3140	1220
84.033.013	KBA30LUU	30	30	39	78	154	59,5	49	15	58	132	10	M8x18	7	2450	5490	1580
84.033.015	KBA40LUU	40	40	51	102	180	78	62	20	80	150	11	M10x25	8,7	3430	8040	3180
84.033.016	KBA50LUU	50	52	61	122	230	102	80	25	100	200	11	M10x25	8,7	6080	15900	6990

Az alumínium házban 2db LME típusú csapágy van.
In the aluminium housing is 2pcs LME bushing.