



**Material:**

Reinforced and stabilised polyamide.  
Oils and greases resistant.

**Surface:**

Satin.

**Colour:**

Black (RAL 9011).

**Central Cap:**

Grey polyamide (RAL 7035 cod. 13).

**Alternative Cap Colour:**

- Orange (RAL 2004 cod. 02)
- Blue (RAL 5015 cod. 07)
- Yellow (RAL 1021 cod. 10)
- Red (RAL 3000 cod. 16)
- Green (RAL 6024 cod. 17)
- Black (RAL 9011 cod. 01)

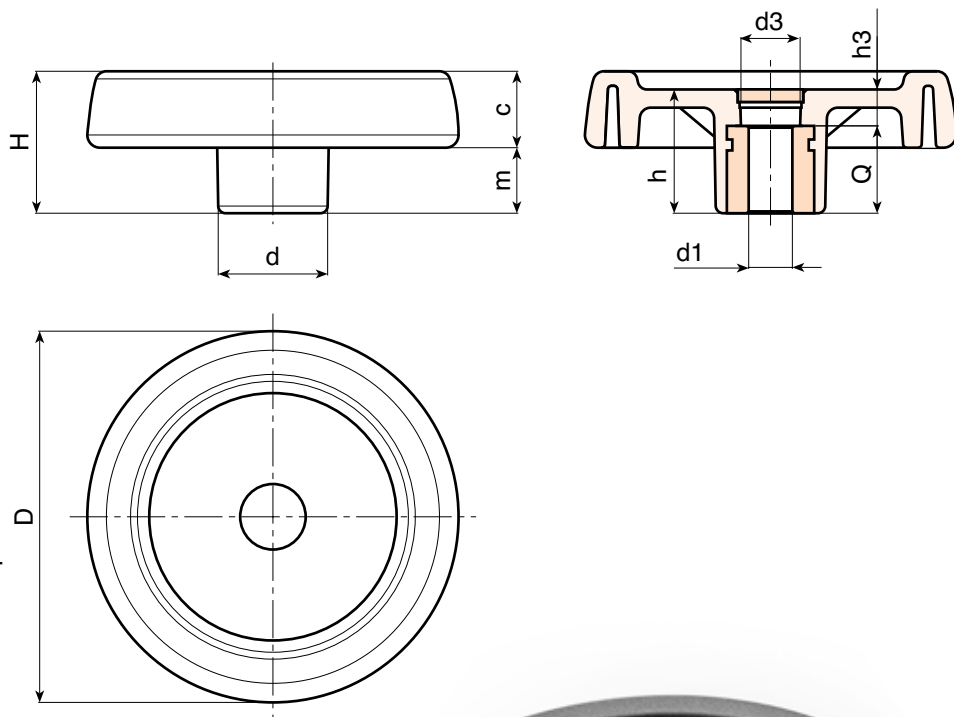
**Main Insert:**

Zinc plated steel insert with smooth through-hole (H10 tolerance).

*For fixing system, or execution of keyway or square holes, please refer to the technical notes attached to the catalogue.*

**SPECIAL REQUEST:**

- It's possible to supply the inserts with d1 bore by customer design, on request and for quantities.
- It's possible to supply the inserts in different material and treatment-finishes, on request and for quantities.
- It's possible to supply the products with colours (reduced range) as shown in the table at page C-11, on request and for quantities.



**Version with zinc plated insert and H10 tolerance bore**

Art.	D	H	h	d	m	c	d3	h3	Dm	d1 H10	Q	g
● C196080.TP0501P	81	33	29	25	16	17	16	9	12	05	20	100
● C196100.TP0501P	100	39	34	30	18,5	20,5	16	10	16	05	24	192
● C196125.TP0501P	125	44	37	36	20	24	26	13	18	05	24	295
● C196150.TD0801P	150	54	44	38	25	29	26	12	22	08	32	520
● C196175.TD0801P	173	57	47	40	25,5	31,5	26	15	22	08	32	660
● C196200.TD0801P	202	59	49	44	24	35	27	13	28	08	36	870
● C196250.TD0801P	249	68	58	59	29	39	36	22	28	08	36	1420

**Attention:** bore d1 (H10 tolerance) could be produced by request, with 50 pieces minimum.

**Dm** = It's possible to increase the hole, by boring, until Dm (enlarge).

**Version with black-oxide insert and H7 tolerance bore**

Art.	D	H	h	d	m	c	d3	h3	Dm	d1 H7	Q	g
● C196080.TD..01PZB	81	33	29	25	16	17	16	9	12	A.R.	20	100
● C196100.TD..01PZB	100	39	34	30	18,5	20,5	16	10	16	A.R.	24	192
● C196125.TD..01PZB	125	44	37	36	20	24	26	13	18	A.R.	24	295
● C196150.TD..01PZB	150	54	44	38	25	29	26	12	22	A.R.	32	520
● C196175.TD..01PZB	173	57	47	40	25,5	31,5	26	15	22	A.R.	32	660
● C196200.TD..01PZB	202	59	49	44	24	35	27	13	28	A.R.	36	870
● C196250.TD..01PZB	249	68	58	59	29	39	36	22	28	A.R.	36	1420

**Attention:** replace the two places in the code .. with the hole diameter required - 50 pieces minimum.

**Dm** = It's possible to increase the hole, by boring, until Dm (enlarge). **A.R.** = By request

