

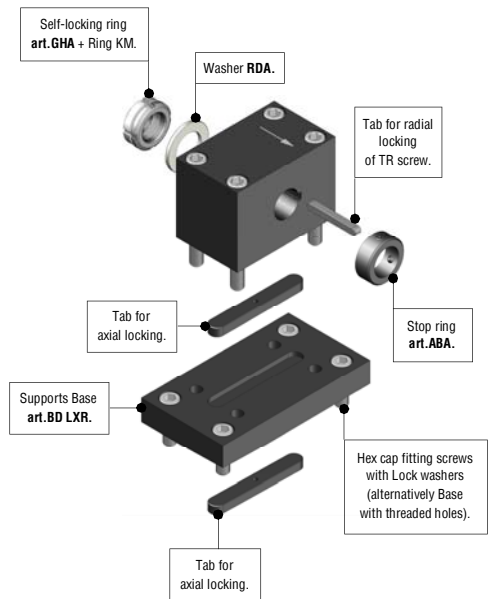
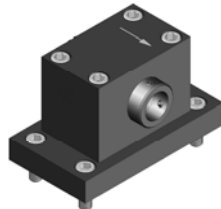
art.DXR/A

**FIXED SUPPORTS mod.20/60** in nitrided steel with radial locking tab and accessories. (item includes Supports Base **BD LXR**)

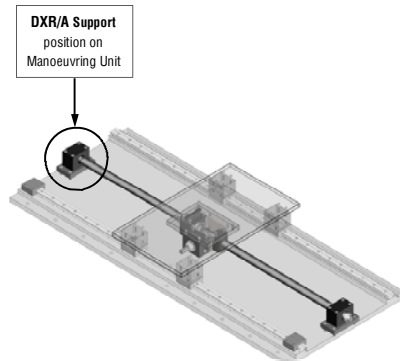
Assembled DXR/A support with Supports Base.

DXR/A Support - exploded diagram.

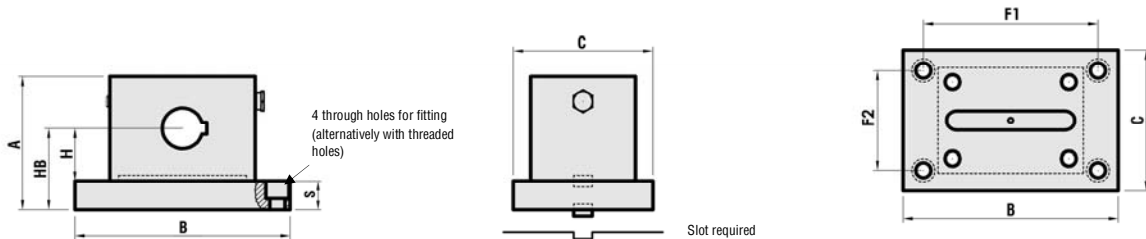
Fitting on machine with Supports Base below.



Fitting on machine with Supports Base above.



— Complete diagrams showing how to fit to the machine are on page 264.



— C = Nett size of the Base BD LXR excluding rings and stop ring ABA.

— Approximate weight of support with Supports Base BD LXR, accessories and fitting bolts.

MODELS	CODE	ARTICLE	A	B	C	S	H	HB	Ø Internal of hole	F1	F2	Hex. Cap screws for fitting	Slot required for fitting	WEIGHT Kg
mod. 20	303SF020	DXR/A 20	69	120	70	15	27,5	42,5	15	100	50	M8x25	Ø12x72x4	2,670
mod. 25	303SF025	DXR/A 25	84	145	80	20	32,5	52,5	17	115	50	M10x30	Ø14x82x4,5	4,400
mod. 30	303SF030	DXR/A 30	89	150	80	20	35	55	20	120	50	M10x30	Ø14x92x4,5	5,070
mod. 35 36	303SF03536	DXR/A 35 36	99	160	100	20	40	60	25	130	70	M10x30	Ø14x102x4,5	7,150
mod. 40	303SF040	DXR/A 40	109	180	100	25	42,5	67,5	30	145	65	M12x35	Ø16x112x5	9,090
mod. 45	303SF045	DXR/A 45	114	185	120	25	45	70	35	150	85	M12x35	Ø16x112x5	11,600
mod. 50	303SF050	DXR/A 50	124	190	120	25	50	75	40	155	85	M12x35	Ø16x122x5	12,860
mod. 55	303SF055	DXR/A 55	139	220	150	30	55	85	40	180	110	M14x45	Ø16x142x5	20,770
mod. 60	303SF060	DXR/A 60	139	220	150	30	55	85	45	180	110	M14x45	Ø16x142x5	20,990

— The supports above are shown assembled in the Rotary nut, Groups (see preceding pages) for which it is possible to calculate the total weight by adding them to the weight of the TR screw using the table on page 182

— To comply with safety regulations it is obligatory to use the locking tabs, the fitting hardware supplied, and ensuring that the arrows engraved in the supports are all facing in the same direction, which for vertical/oblique movements must be facing downwards.