

VLT series

Caratteristiche

Materiale Corpo:

Phenoplasto rinforzato di colore Nero, resistente a solventi, oli, grassi ed altri agenti chimici

Parte Metallica e/o

Fissaggio:

Mozzo in AVP zincato con pre-foro

Product specification

Main Part Material:

Black Phenoplast, solvents, oils, greases and other chemical agents proof

Metallic Part Material &

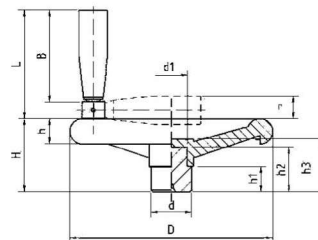
Finishing:

Zinc Plated Steel Hub with Predrilled Hole

Other plastic components:

Snap Handle, Collapsible

Volantino a 4 Razze con Maniglia a Scatto Ribaltabile Handwheel, 4-Spokes Snap Handle Collapsible



| Codice | B | D | d | d1 | H | h | h1 | h2 | h3 | L | r | Peso grammi Weight gr | Confezione Pz Packing Pcs. |
|----------|----|-----|----|----|----|----|----|----|----|-----|----|--------------------------|-------------------------------|
| B1VLT100 | 46 | 100 | 24 | 21 | 47 | 15 | 17 | 36 | 39 | 60 | 17 | 225 | 1 |
| B1VLT120 | 65 | 120 | 25 | 21 | 49 | 16 | 15 | 35 | 38 | 82 | 17 | 286 | 1 |
| B1VLT140 | 65 | 140 | 28 | 23 | 54 | 20 | 17 | 38 | 41 | 82 | 17 | 403 | 1 |
| B1VLT160 | 65 | 160 | 32 | 27 | 56 | 22 | 21 | 40 | 43 | 82 | 17 | 521 | 1 |
| B1VLT200 | 86 | 200 | 40 | 32 | 72 | 25 | 25 | 47 | 51 | 107 | 21 | 957 | 1 |
| B1VLT250 | 86 | 250 | 50 | 42 | 82 | 29 | 29 | 56 | 60 | 107 | 21 | 1669 | 1 |
| B1VLT300 | 86 | 300 | 52 | 42 | 95 | 35 | 30 | 63 | 68 | 107 | 21 | 2283 | 1 |

VLTA series

Caratteristiche

Materiale Corpo:

Phenoplasto rinforzato di colore Nero, resistente a solventi, oli, grassi ed altri agenti chimici

Parte Metallica e/o

Fissaggio:

Mozzo in AVP zincato con pre-foro per esecuz. foro passante

Product specification

Main Part Material:

Black Phenoplast, solvents, oils, greases and other chemical agents proof

Metallic Part Material &

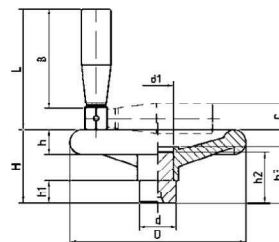
Finishing:

Zinc plated Steel Visible Hub, with preformed Punching

Other plastic components:

Snap Handle, Collapsible

Volantino a 4 Razze con Mozzo Affiorante e Maniglia a Scatto Ribaltabile Handwheel, 4-Spokes Snap Handle Collapsible and Visible Hub



| Codice | B | D | d | d1 | H | h | h1 | h2 | h3 | L | r | Peso grammi Weight gr | Confezione Pz Packing Pcs. |
|-----------|----|-----|----|----|----|----|----|----|----|-----|----|--------------------------|-------------------------------|
| B1VLTA100 | 46 | 100 | 24 | 21 | 47 | 15 | 17 | 36 | 39 | 60 | 17 | 242 | 1 |
| B1VLTA120 | 65 | 120 | 25 | 21 | 49 | 16 | 15 | 35 | 38 | 82 | 17 | 298 | 1 |
| B1VLTA140 | 65 | 140 | 28 | 23 | 54 | 20 | 17 | 38 | 41 | 82 | 17 | 417 | 1 |
| B1VLTA160 | 65 | 160 | 32 | 27 | 56 | 22 | 21 | 40 | 43 | 82 | 17 | 543 | 1 |
| B1VLTA200 | 86 | 200 | 40 | 32 | 72 | 25 | 25 | 47 | 51 | 107 | 21 | 1000 | 1 |
| B1VLTA250 | 86 | 250 | 50 | 42 | 82 | 29 | 29 | 56 | 60 | 107 | 21 | 1680 | 1 |
| B1VLTA300 | 86 | 300 | 52 | 42 | 95 | 35 | 30 | 63 | 68 | 107 | 21 | 2336 | 1 |