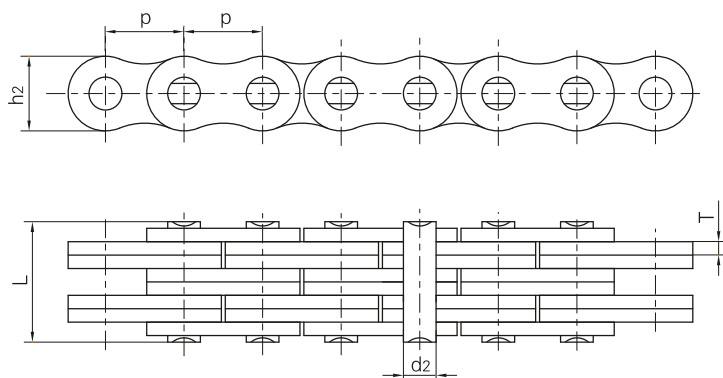
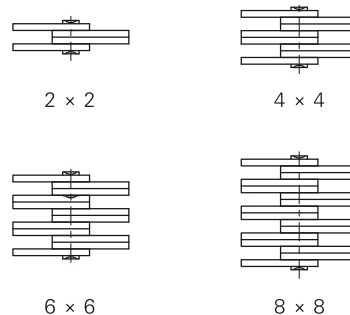


板式鏈
Leaf chains

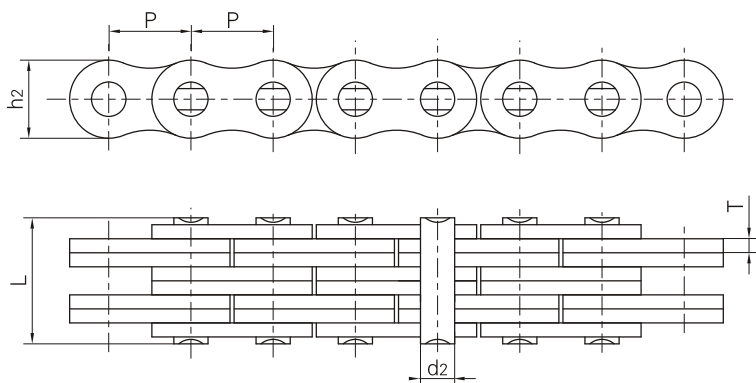


鏈板組合
Plate lacing

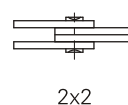


DIN/ISO 鏈號	節距 Pitch	鏈板組合 Plate lacing	鏈板高度 Plate depth	鏈板厚度 Plate thickness	銷軸直徑 Pin diameter	銷軸長度 Pin length	極限拉伸載荷 Ultimate tensile strength	平均拉伸載荷 Average tensile strength	每米長重 Weight per meter
DIN/ISO Chain No.	P		h ₂ max	T max	d ₂ max	L max	Q min	Q ₀	q
	mm		mm	mm	mm	mm	kN/LB	kN	kg/m
LL0822	12.7	2 × 2	10.6	1.6	4.45	8.9	18.2/4094	20.4	0.42
LL0844		4 × 4				15.6	36.4/8188	40.7	0.84
LL0866		6 × 6				22.0	54.6/12283	60.0	1.24
LL0888		8 × 8				28.5	72.8/16378	80.0	1.64
LL1022	15.875	2 × 2	13.7	1.6	5.08	9.2	22.7/5107	25.5	0.54
LL1044		4 × 4				15.8	45.4/10213	51.0	1.06
LL1066		6 × 6				22.1	68.1/15321	76.3	1.57
LL1088		8 × 8				28.8	90.8/20427	101.9	2.10
LL1222	19.05	2 × 2	16.0	1.85	5.72	10.4	29.5/6637	33.2	0.73
LL1244		4 × 4				17.9	59.0/13273	66.4	1.44
LL1266		6 × 6				25.4	88.5/19910	99.7	2.15
LL1288		8 × 8				32.9	118.0/26547	132.9	2.84
LL1622	25.4	2 × 2	21.0	3.1	8.28	17.2	58.0/13182	66.7	1.52
LL1644		4 × 4				29.6	116.0/26363	140.0	2.90
LL1666		6 × 6				42.4	174.0/39545	208.8	4.30
LL1688		8 × 8				54.9	232.0/52726	278.0	5.71
LL2022	31.75	2 × 2	26.4	3.5	10.19	20.1	95.0/21591	109.2	2.33
LL2044		4 × 4				33.8	190.0/43182	218.5	4.40
LL2066		6 × 6				50.1	285.0/64773	324.6	6.79
LL2088		8 × 8				64.0	380.0/86363	435.1	8.90

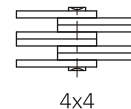
板式鏈
Leaf chains



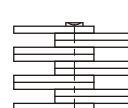
鏈板組合
Plate lacing



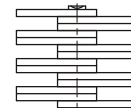
2x2



4x4



6x6



8x8

DIN/ISO 鏈號	節距 Pitch	鏈板組合 Plate lacing	鏈板高度 Plate depth	鏈板厚度 Plate thickness	銷軸直徑 Pin diameter	銷軸長度 Pin length	極限拉伸載荷 Ultimate tensile strength	平均拉伸載荷 Average tensile strength	每米長重 Weight per meter
DIN/ISO Chain No.	P		h ₂ max	T max	d ₂ max	L max	Q min	Q ₀	q
	mm		mm	mm	mm	mm	kN/LB	kN	kg/m
LL2422	38.1	2 × 2	33.4	5.0	14.63	28.4	170.0/38363	195.5	4.47
LL2444		4 × 4				46.3	340.0/77273	380.8	8.22
LL2466		6 × 6				66.4	510.0/115909	571.2	12.22
LL2488		8 × 8				86.6	680.0/154545	775.2	16.30
LL2822	44.45	2 × 2	37.08	6.0	15.90	32.2	200.0/45455	224.0	5.10
LL2844		4 × 4				56.4	400.0/90909	448.0	9.90
LL2866		6 × 6				80.8	600.0/136363	672.0	14.60
LL2888		8 × 8				105.2	800.0/181818	896.0	19.40
LL3222	50.80	2 × 2	42.0	6.4	17.81	34.8	260.0/59091	291.2	6.20
LL3244		4 × 4				60.6	520.0/118182	582.4	12.30
LL3266		6 × 6				86.4	780.0/177272	873.6	18.30
LL3288		8 × 8				112.2	1040.0/233970	1176.0	24.00
LL4022	63.50	2 × 2	52.76	8.0	22.89	42.2	360.0/81818	403.2	10.30
LL4044		4 × 4				74.4	780.0/177273	873.6	20.00
LL4066		6 × 6				106.5	1080.0/245454	1209.6	30.00
LL4088		8 × 8				140.0	1440.0/323959	1747.2	39.10
LL4822	76.20	2 × 2	63.88	10.0	29.24	54.6	560.0/127272	627.2	18.50
LL4844		4 × 4				92.6	1120.0/254545	1554.4	35.70
LL4866		6 × 6				133.4	1680.0/377953	1880.0	53.00
LL4888		8 × 8				174.2	2240.0/509091	2508.8	70.40